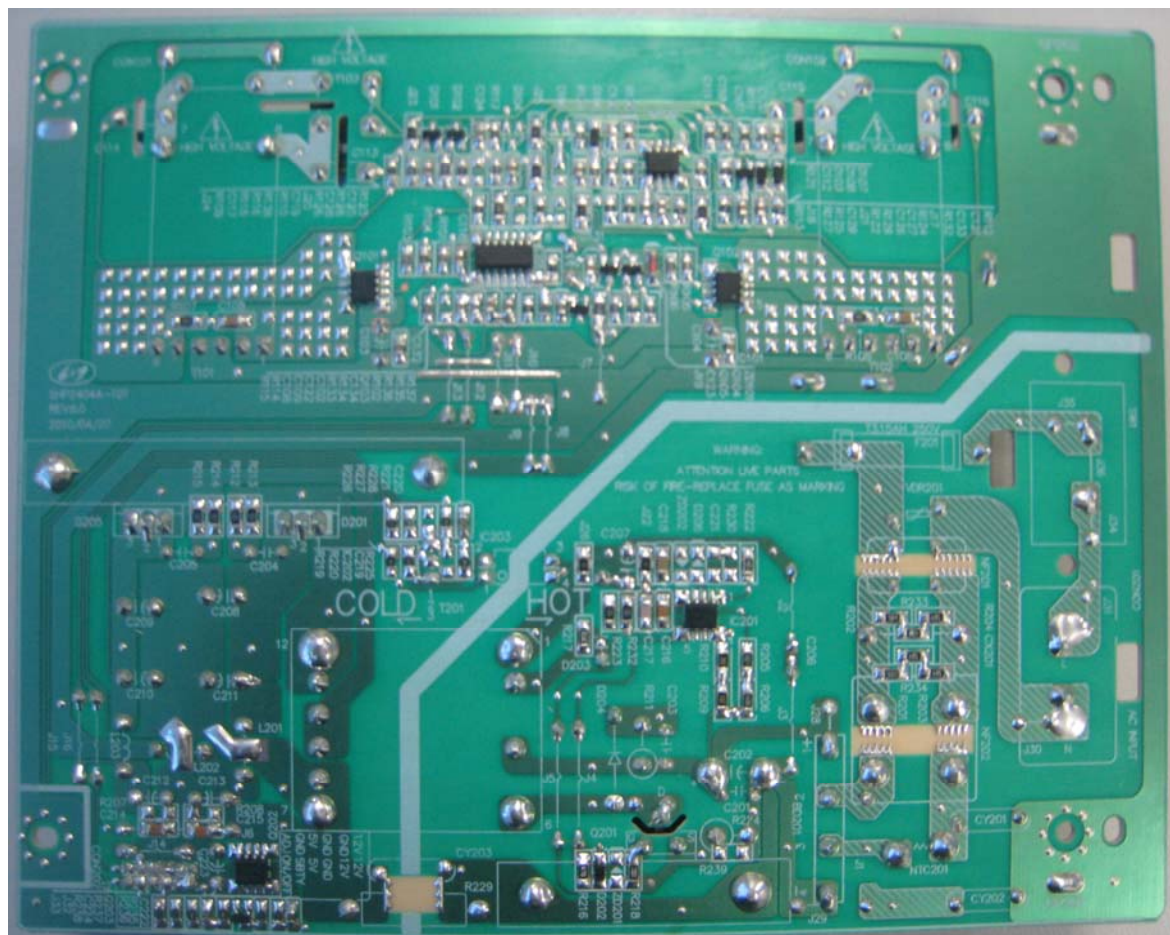


[illegible]



5 接插件 (CONNECTORS)

5.1 位号 (LOCATION): CON201

接插件型号 (CONNECTOR TYPE): VH-3A(3取2) or equivalent

Pin No.	Name	Note
1	AC-L	AC Input
2	NC	NC
3	AC-N	AC Input

5.2 位号 (LOCATION): CON202

接插件型号 (CONNECTOR TYPE): PHDK-2*6AW, 2.0 脚距, 双排 12 针, 卧式

PIN NO.	Symbol	Description
1, 2	+12V	Power +12V
3	GND	Power GND
4	+12V	Power +12V
5, 6	GND	Power GND
7, 8	+5V	Power +5V
9	GND	Power GND
10	STBY	STBY control
11	ADJ	Brightness
12	ON/OFF	On/off control

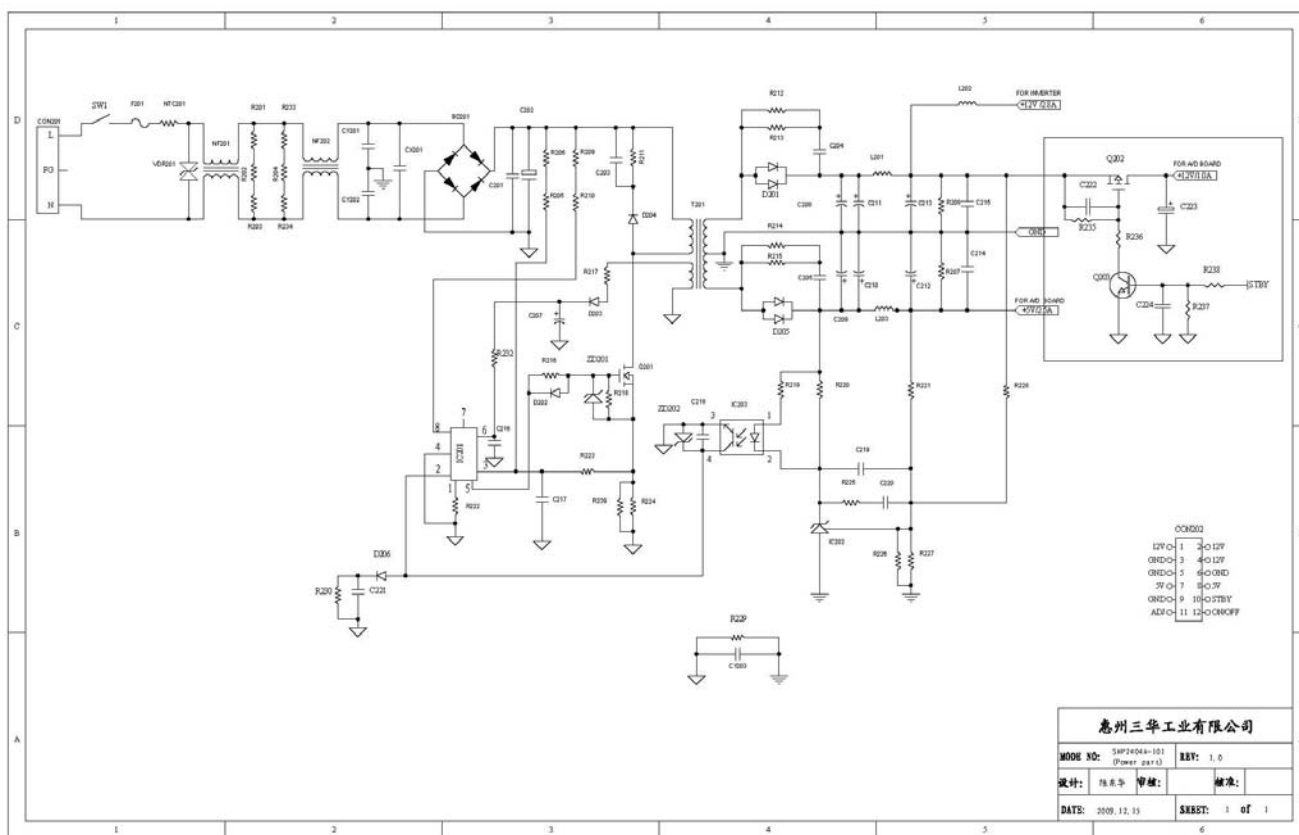
5.3 位号 (LOCATION): CON101、CON102

接插件型号 (CONNECTOR TYPE): FCN W01-05100-022N or equivalent

Pin No	Symbol	Description
1	Vout-HV+	High Voltage (Pink)
2	Vout-HV-	High Voltage (White)

7 线路图 (CIRCUIT SCH)

7.1 POWER PART



7.2 INVERTER PART

